



FORD  
**2022 MAVERICK™**

# THE ALL-NEW 2022 FORD MAVERICK.

Combining truck utility and functionality with SUV maneuverability and space, the all-new 2022 Ford Maverick™ pickup truck has spacious room for up to 5 passengers, thanks to its 4-door crew cab and spacious 2nd row. The first ever pickup truck with a standard 2.5L Full Hybrid engine<sup>1</sup> has an EPA-estimated range of 500 miles.<sup>2</sup> An ingenious FLEXBED™ system out back doesn't just give you ample storage, but allows you to utilize a host of Do-it-Yourself options or available Ford Accessories to take on that next adventure. And its compact size makes it easy to maneuver and park. Available in XL, XLT and LARIAT™ trims, and all developed and tested to legendary Built Ford Tough® standards. It's the truck you never knew you needed. Until now. Introducing the 2022 Ford Maverick pickup. A decidedly new way to roam.



EPA-ESTIMATED RATING OF  
**42 CITY MPG**  
WITH 2.5L FULL HYBRID ENGINE<sup>1,3</sup>

**4,000 LBS.**  
MAX. AVAILABLE TOWING<sup>4</sup> WITH  
AVAILABLE 2.0L ECOBOOST® ENGINE

**1,500 LBS.**  
MAX. AVAILABLE  
PAYLOAD<sup>5</sup>

**LARIAT.**™ Hot Pepper Red Metallic Tinted Clearcoat.<sup>6</sup> Available equipment. (Max. Payload 1,392 lbs. and Max. Conventional Towing 1,892 lbs., when properly equipped with 2.5L Full Hybrid engine.)

**1.** Limited availability. See dealer for available inventory stock. **2.** Range calculation based on 13.8-gallon tank, and an EPA-estimated rating of 37 mpg combined. Actual range will vary. **3.** EPA-estimated rating of 42 city mpg/33 highway mpg/37 combined mpg. Actual mileage will vary. **4.** Max. towing of 4,000 lbs. with available 2.0L EcoBoost engine with AWD and available 4K Tow Package (not shown). Max. towing varies based on cargo, vehicle configuration, accessories and number of passengers. **5.** Max. payload of 1,500 lbs. with standard 2.5L Full Hybrid engine FWD (shown). Max. payload varies and is based on accessories and vehicle configuration. See label on door jamb for carrying capacity of a specific vehicle. **6.** Additional charge.

Towing, payload and EPA-estimated fuel economy ratings are independent attributes and may not be achieved simultaneously.

BUILT *Ford* PROUD

Vehicle imagery throughout this brochure may be computer-generated and may include available Ford Accessories and aftermarket equipment.

# THE FIRST STANDARD FULL HYBRID PICKUP IN AMERICA.

Familiar paths lead to familiar outcomes. Ford engineers took the Maverick™ pickup truck in a bold direction by making it the first pickup with a standard 2.5L Full Hybrid engine. The 2.5L Atkinson-cycle full hybrid engine is mated with a smooth shifting CVT transmission for an EPA-estimated rating of 42 city mpg.<sup>1</sup> That's efficiency that impresses, day in and day out. And with 191 horsepower, a Tow/Haul Selectable Drive Mode, and a standard towing capacity of 2,000 lbs.,<sup>2</sup> there's power to tow your personal watercraft or a pair of dirt bikes as well.



## EPA-ESTIMATED RANGE OF 500 MILES<sup>3</sup>

You can cover a lot of territory in 500 miles. That's the EPA-estimated range<sup>3</sup> of travel on one tank of gas with the 2.5L Full Hybrid engine in Maverick pickup. And if your adventures remain in the city, you're all set there with an EPA-estimated 42 city mpg.<sup>1</sup> So whether you vacay or staycay, the Maverick pickup can handle it.

**XLT.** Velocity Blue Metallic. Available Luxury and Ford Co-Pilot 360™ Packages. Available equipment. (Max. Payload 1,481 lbs. and Max. Conventional Towing 1,981 lbs., when properly equipped with 2.5L Full Hybrid engine.)

**1.** EPA-estimated rating of 42 city mpg/33 highway mpg/37 combined mpg. Actual mileage will vary. **2.** Max. towing varies based on cargo, vehicle configuration, accessories and number of passengers. **3.** Range calculation based on 13.8-gallon fuel tank and an EPA-estimated rating of 37 combined mpg. Actual range will vary. **4.** Calculated via combined performance of the engine and electric motor(s) with peak battery power. The calculations utilize SAE J1349® engine results and Ford electric motor dyno testing. Your results may vary. **5.** Max. payload varies and is based on accessories and vehicle configuration. See label on door jamb for carrying capacity of a specific vehicle.

## 2.5L FULL HYBRID

**191** HP<sup>4</sup>

**155** LB.-FT.  
TORQUE<sup>4</sup>

EPA-ESTIMATED FUEL ECONOMY RATINGS<sup>1</sup>

**42** CITY MPG

**33** HWY MPG

**37** COMB MPG

**MAX. PAYLOAD<sup>5</sup>**  
**1,500 LBS.**

**MAX. TOWING<sup>2</sup>**  
**2,000 LBS.**

Horsepower, torque, payload, towing and EPA-estimated fuel economy ratings are independent attributes and may not be achieved simultaneously.





## 2.0L ECOBOOST

250<sup>HP</sup><sup>1</sup>

277<sup>LB.-FT.</sup><sup>TORQUE</sup><sup>1</sup>

EPA-ESTIMATED FUEL ECONOMY RATINGS<sup>2</sup>

**FWD** 23 CITY MPG  
30 HWY MPG  
26 COMB MPG

**AWD** 22 CITY MPG  
29 HWY MPG  
25 COMB MPG

Horsepower, torque, towing and EPA-estimated fuel economy ratings are independent attributes and may not be achieved simultaneously.

# MORE POWER FOR YOUR ADVENTURES.

For those who want more power at their disposal, the Ford Maverick™ pickup offers an available 2.0L EcoBoost® gas engine – mated to a quick and refined shifting 8-speed automatic transmission – that offers impressive amounts of horsepower and torque for pulling and passing power. This potent output allows for a max. towing capacity of 4,000 lbs.<sup>3</sup> with the available 4K Tow Package, so you can bring additional fun along to your destination. Plus, available all-wheel drive (AWD) helps improve traction on a variety of road and surface conditions. Five Selectable Drive Modes on every Maverick let you tailor the mode to the road to enhance performance and confidence over various driving conditions.



## FX4 OFF-ROAD PACKAGE

Give the Maverick pickup all the hardware and technology you need to venture off the beaten path. With skid plates, all-terrain tires, a 6.5" instrument cluster LCD screen, exposed front tow hooks, and more, Maverick with the available FX4™ Off-Road Package is ready for your off-road adventures.<sup>4</sup> Unique Mud/Ruts and Sand Selectable Drive Modes on FX4 give you further control when the going gets tough.

**LARIAT.**™ Iconic Silver Metallic. Available Luxury and 4K Tow Packages. Available equipment. (Max. Conventional Towing 4,000 lbs. when properly equipped with 2.0L EcoBoost engine and AWD.)

**1.** Max. horsepower and torque ratings based on premium fuel per SAE J1349® standard. Your results may vary. **2.** Actual mileage will vary. **3.** Available 4K Towing with available 2.0L EcoBoost engine and AWD with available 4K Tow Package. Max. towing varies based on cargo, vehicle configuration, accessories and number of passengers. **4.** Always consult the Owner's Manual before off-road driving, know your terrain and trail difficulty, and use appropriate safety gear.



INSIDE AND OUT, THERE'S  
**SPACE FOR YOUR LIFE.**

The interior of the Ford Maverick™ pickup is geared toward getting you to the fun, wherever that may be. The driver's seat gives you a good vantage point of the journey ahead. And efficient use of interior space in the SuperCrew® cabin means there's spacious room for everyone and their gear. Beverage holders are big enough to hold a 1.5-liter bottle, while deep door pockets can handle small items. A Ford Integrated Tether System (FITS) slot at the rear of the center console and inside the rear under-seat bins can accommodate different accessories (cord organizer, grocery hook and under-seat storage bin divider) for endless personalization. If you need more space for gear, the truck bed is always available.



- 
- A. HEATED STEERING WHEEL**  
Take the chill out of early mornings with this very pleasing available feature.
  - B. B&O® PREMIUM AUDIO SYSTEM**  
Unwind with 8 high-performance speakers and 660 watts of digitally processed sound from this available high-powered sound system.
  - C. 8-WAY POWER DRIVER'S SEAT WITH POWER LUMBAR**  
Help keep your lower back happy with the power lumbar feature of this available 8-way power driver's seat.
  - D. 110V/400W AC POWER OUTLET ON CENTER CONSOLE REAR**  
Keep 2nd-row devices charged and at the ready with this conveniently located available power outlet. There's another available 110V/400W outlet in the truck bed as well.
  - E. REAR POWER-SLIDING WINDOW**  
Get some additional ventilation in the cabin with this button-operated available feature.
  - F. REAR UNDER-SEAT STORAGE**  
Hold items in place with this clever available storage unit. Large enough to hold an inflated volleyball, tools or additional gear. To hide what you've stored, fold the seat down.
- 

LARIAT.™ Desert Brown ActiveX™ Trimmed Seats. Available Luxury and 4K Tow Packages. Available equipment.

# FULL OF MODERN CONVENIENCES.

This command center is geared toward making you feel at home in the city or the great outdoors. Start with the standard FordPass™ Connect<sup>1</sup> with 4G LTE Wi-Fi hotspot capability<sup>2</sup> and go from there. Use the FordPass App<sup>3</sup> to start/stop Maverick right from your smartphone.<sup>1</sup> The available XLT or LARIAT™ Luxury Packages add luxurious touches like heated mirrors, heated seats, a leather-wrapped heated steering wheel and so much more.

## A. 6.5" LCD PRODUCTIVITY SCREEN

This available screen centers the instrument panel. Available Selectable Drive Mode animations, and much more, show up here.

## B. 8" LCD TOUCHSCREEN

Standard on every Ford Maverick™ pickup truck. Use a USB cord to connect your navigation apps with Apple CarPlay® or Android Auto™ compatibility to see the route on a bigger screen than your mobile phone.<sup>4</sup>

## C. PUSH-BUTTON START

Standard on LARIAT, this convenient feature lets you start Maverick with just the touch of a button.

## D. WIRELESS CHARGING<sup>5</sup>

This available feature makes phone charging simple. It takes a cord out of the cab and out of your way.

## E. SMART-CHARGING USB PORTS

Utilize one Type A and one Type C charge port to keep your devices and personal items charged and at the ready.

## F. ROTARY GEAR SHIFT DIAL

Allows for a streamlined center console with optimized storage space. Switches for the Selectable Drive Modes are behind this in the center console.

**LARIAT.** Desert Brown ActiveX™ Trimmed Seats. Available Luxury and 4K Tow Packages. Available equipment.

**1.** FordPass Connect, the FordPass App, and complimentary Connected Service are required for remote features (see FordPass Terms for details). Connected service and features depend on compatible AT&T network availability. Evolving technology/cellular networks/vehicle capability may limit functionality and prevent operation of connected features. Connected service excludes Wi-Fi hotspot. **2.** Wi-Fi hotspot includes complimentary wireless data trial that begins upon AT&T activation and expires at the end of 3 months or when 3GB of data is used, whichever comes first. To activate, go to [www.att.com/ford](http://www.att.com/ford). **3.** The FordPass App, compatible with select smartphone platforms, is available via download. Message and data rates may apply. **4.** Requires phone with active data service and compatible software. SYNC 3 does not control 3rd-party products while in use. 3rd parties are solely responsible for their respective functionality. **5.** Qi wireless charging may not be compatible with all mobile phones. **6.** Commands may vary by phone and AppLink software. **7.** Don't drive while distracted or while using handheld devices. Use voice-operated systems when possible. Some features may be locked out while the vehicle is in gear. Not all features are compatible with all phones.



## UNLOCK THE FULL EXPERIENCE WITH AVAILABLE SYNC® 3

There's so much you can do with SYNC 3, it's hard to contain it to a page. From phone calls to music to the apps with available SYNC AppLink,<sup>®6</sup> voice-activated SYNC 3<sup>7</sup> helps keep you connected to your world while you're on the go.



SCAN TO LEARN MORE  
or visit [Ford.com/SYNC](http://Ford.com/SYNC)  
Data rates may apply.



AVAILABLE  
**BLIS® (BLIND SPOT INFORMATION SYSTEM)<sup>1</sup>**

Changing lanes demands your full attention. BLIS can help by alerting you to vehicles detected in your blind spots before you attempt to change lanes.

# CONFIDENCE. MILE AFTER MILE.

With their ability to monitor situations and conditions, this well-rounded collection of available Ford Co-Pilot360™ Technology driver-assist features<sup>1</sup> can supplement your driving skills, helping you feel confidently in command behind the wheel.

## FORD CO-PILOT360™ TECHNOLOGY

### STANDARD FEATURES

- Auto High-Beam Headlamps
- Autolamp (Automatic On/Off Headlamps)
- Pre-Collision Assist with Automatic Emergency Braking
- Post-Collision Braking
- Rear View Camera

### AVAILABLE FEATURES

- Adaptive Cruise Control with Stop-and-Go
- BLIS (Blind Spot Information System) with Cross-Traffic Alert
- Evasive Steering Assist
- Lane Centering Assist
- Lane-Keeping System
- Rear Parking Sensors



SCAN TO LEARN MORE  
or visit [Ford.com/Technology](https://ford.com/technology)  
*Data rates may apply.*

**LARIAT™** Shadow Black. Available Luxury Package. Available equipment.

**1.** Driver-assist features are supplemental and do not replace the driver's attention, judgment and need to control the vehicle. It does not replace safe driving. See Owner's Manual for details and limitations.

# FYI. THIS SPACE IS MADE FOR DIY-ERS.

Welcome to the FLEXBED™ system, the official Maker Space of the all-new 2022 Ford Maverick™ truck. Through Ford Accessories and creative Do-It-Yourself (DIY) solutions, FLEXBED gives you organization and storage choices for your space. Vertical and horizontal slots for 2x4 and 2x6 boards let you create your own bike racks, segmented storage and more. A multi-position tailgate and up to 10 available tie-downs are optimized to help secure items in the bed. It's easy to get DIY-ing with Maverick. And if you'd rather go with Ford Accessories, there are plenty of available options to help you utilize FLEXBED to its fullest.

## A. MULTI-POSITION TAILGATE

Extend the bed length from 4.5' to 6'. Have the gate all the way down or attach it to the next position up. Tie-down clamps can also function as bottle openers. Multi-use smart.

## B. TWO 12V PRE-WIRED CONNECTORS

To support DIY electrical projects without compromising the overall electrical system, these 12V connectors can be found on both sides of the bed behind an easily removable cover.

## C. 110V/400W AC OUTLET

Located in the bed, this available outlet is able to power your laptop, small TV, battery charger or small corded tool.

## D. 6 STANDARD TIE DOWNS

4 D-rings and 2 tie-downs at optimized locations in the bed help to secure items during transport.

**XLT.** Area 51. Available Luxury and Ford Co-Pilot360™ Packages. Available equipment and available Ford Accessories.

## E. BED DIVIDER SLOTS

Use 2x4s or 2x6s to divide the bed in manageable sections with these convenient bed divider slots.

## F. BED TIE-DOWN LOCKING RAILS

Available rails on each side of the bed can support multiple tie-down points, offering flexibility in securing different types of loads.

## G. CARGO STORAGE COMPARTMENT

Located in the rear of the bed on the passenger side, this available compartment helps keep a ball hitch, air pump and other small items securely stored.



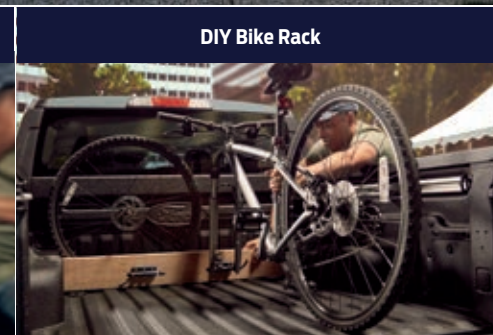
Available Factory-Installed LED Bed Lighting and Available 110V/400W AC Outlet



DIY Bed Divider



DIY Bedside Rail



DIY Bike Rack



DIY Bed Rail Lighting Capability



SCAN FOR MORE DIY FLEXBED IDEAS  
Data rates may apply.





# HAUL A BUNCH. TOW TONS.

Ford Maverick™ pickup is a truck, so you'll be surprised at all the truck-like things you'll soon be doing (or being asked to do). Load up the bed with mulch bags (without the mulch harming the vehicle interior). Plywood sheets stay where they're supposed to: outside. With a standard towing capability of 2,000 lbs., an ATV or lawnmower can be easily transported in the bed or on a trailer. You might just be on your way to being one of the most popular neighbors on the street, thanks to your Ford Maverick pickup truck. So get used to the attention.

**1,500 LBS.**  
**MAX. PAYLOAD<sup>1</sup>**  
2.5L FULL HYBRID OR GAS ENGINE

AVAILABLE  
**4,000 LBS.**  
**MAX. TOWING<sup>2</sup>**  
2.0L ECOBOOST® GAS ENGINE



**37** 40-lb. Mulch Bags  
Total weight: **1,480 lbs.**



**18** 3/4" Plywood Sheets  
Total weight: **1,080 lbs.**



**1** All-Terrain Vehicle  
Total weight: **405 lbs.**



Ski Boat 3,100 lbs.  
Fuel 200 lbs.  
Trailer 700 lbs.  
Total weight: **4,000 lbs.**



Mower (x2) 550 lbs.  
Trailer 2,200 lbs.  
Tools, Fuel, etc. 700 lbs.  
Total weight: **3,450 lbs.**



Up to a 23' Camper Trailer  
Total weight: **3,800 lbs.**

**XL.** Carbonized Gray Metallic. Available 4K Tow Package. Available equipment. (Max. Payload 1,485 lbs. and Max. Conventional Towing 4,000 lbs., when properly equipped with 2.0L EcoBoost engine and all-wheel drive.)

**1.** Max. payload of 1,500 lbs. with standard 2.5L Full Hybrid engine FWD. Max. payload varies and is based on accessories and vehicle configuration. See label on door jamb for carrying capacity of a specific vehicle. **2.** Available 4K towing with available 2.0L EcoBoost engine and available 4K Tow Package. Max. towing varies based on cargo, vehicle configuration, accessories and number of passengers.

Payload and towing are independent attributes and may not be achieved simultaneously.

Properly secure all cargo.



Built Ford Tough® values are the ties that bind the doers of the world with the trucks that get things done. They motivate the creativity of our designers, the ingenuity of our engineers, and affect nearly every component, part and assembly that goes into Built Ford Tough trucks. They're the call to test our trucks to the limit, and the duty to stand the test. They span millions of miles, and they've helped make F-Series® America's best-selling trucks for 44 years.<sup>1</sup> Put any of our trucks to the test and discover what Built Ford Tough means to you.

---

#### **ENGINEERED FOR EXTREMES**

The Maverick™ pickup architecture has endured 19 million miles of customer equivalent durability testing in real world, lab and proving ground environments. It's been tested in extreme weather, taken over off-road durability tests, endured harsh chassis tuning, and much more. After these tests, it's more than ready for yours.

#### **DECADES OF TRUCK EXPERIENCE**

Backed by over 100 years of Ford Truck engineering expertise, there's no doubt the all-new Ford Maverick pickup meets the legendary standards of Built Ford Tough.

#### **UNIBODY CONSTRUCTION**

The unibody construction of Ford Maverick has its advantages. With body and frame in one piece, Maverick has a controlled, on-road presence and instills confidence on the highway as well as when the road gets rough. Plus, the unibody construction helps deliver excellent steering precision, nimble urban driving and does not experience the harsh ride of some body-on-frame pickup trucks.

#### **CLEAN, EFFICIENT DESIGN**

There's no gap between the cab and tailgate on Maverick, and the bed rail caps extend from the bed and go vertical, ending at the top of the back window. This design helps enhance dent and ding protection, knowing people will load and unload the bed from the sides more frequently.



# BUILT FORD TOUGH.

---

<sup>1</sup>. Best-selling trucks for 44 years based on 1977-2020 CY total sales.

XL



Velocity Blue Metallic. Available equipment.

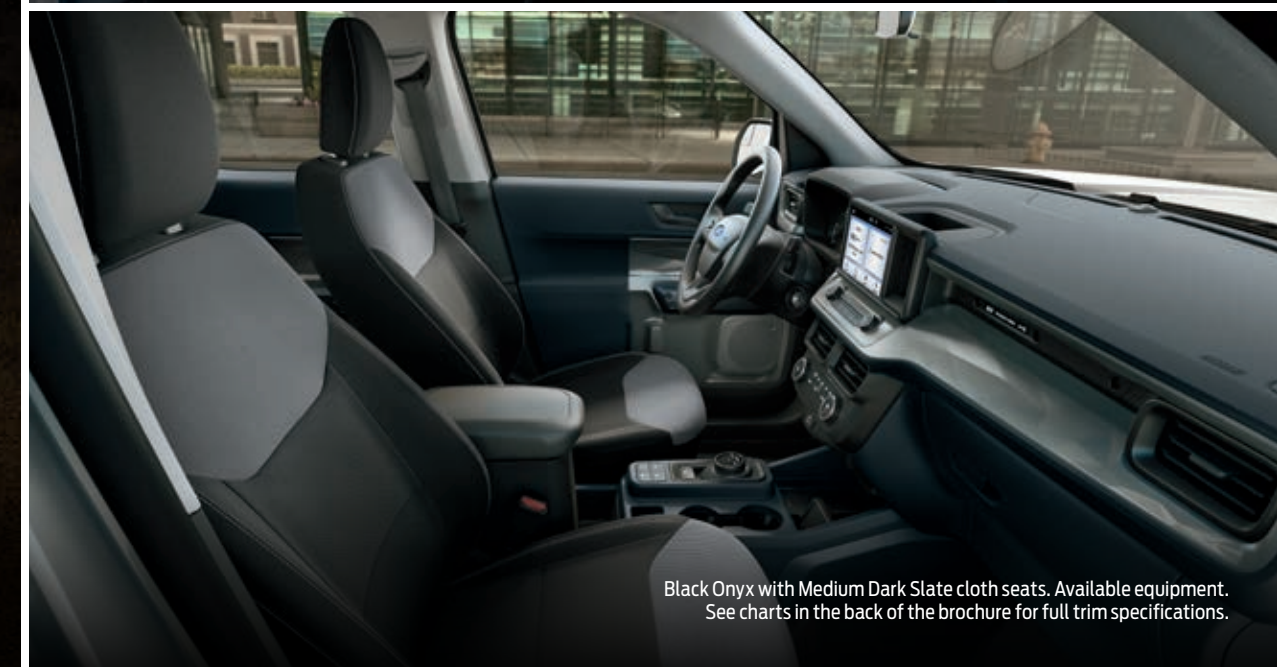
1. FordPass Connect, the FordPass App, and complimentary Connected Service are required for remote features (see FordPass Terms for details). Connected service and features depend on compatible AT&T network availability. Evolving technology/cellular networks/vehicle capability may limit functionality and prevent operation of connected features. Connected service excludes Wi-Fi hotspot. 2. Wi-Fi hotspot includes complimentary wireless data trial that begins upon AT&T activation and expires at the end of 3 months or when 3GB of data is used, whichever comes first. To activate, go to [www.att.com/ford](http://www.att.com/ford).

#### XL HIGHLIGHTS

- Two 12V pre-wired connections in the bed
- 6 cargo bed tie-downs
- 8" center stack screen with Bluetooth® and Apple CarPlay® and Android Auto™ compatibility
- 12V power outlets (front and rear)
- Autolamp (Automatic On/Off Headlamps)
- FLEXBED™ system
- FordPass™ Connect<sup>1</sup> with 4G LTE
- Wi-Fi hotspot capability<sup>2</sup>
- LED headlamps
- Multi-function tailgate
- Pre-Collision Assist with Automatic Emergency Braking (AEB)
- Rear under-seat storage bins
- Rear View Camera
- Remote Keyless Entry
- Steering wheel audio controls
- Tilt/telescoping steering column
- Available 4K Tow Package (gas with AWD only)
- Available Ford Co-Pilot360™ Package (See Specifications for all Package contents)



Instrumental panel. Available equipment.



Black Onyx with Medium Dark Slate cloth seats. Available equipment. See charts in the back of the brochure for full trim specifications.

XLT



Cyber Orange Metallic Tri-coat.<sup>1</sup> Available XLT Luxury Package. Recreational equipment not included.

**XLT HIGHLIGHTS**

- 4 additional cargo bed tie-downs (10 total)
- 17" painted aluminum wheels
- Cruise control
- FLEXBED™ cubby storage
- Power tailgate lock
- Power exterior mirrors
- SecuriCode® keyless entry keypad
- Unique cloth bucket seats
- Available 4K Tow Package (gas with AWD only)
- Available Ford Co-Pilot360™ Package
- Available FX4™ Off-Road Package (AWD only)
- Available XLT Luxury Package
- (See Specifications for all Package contents)



Instrument panel. Available equipment.



Navy Pier with Medium Slate cloth seats. Available equipment. See charts in the back of the brochure for full trim specifications. 1. Additional charge.

LARIAT™



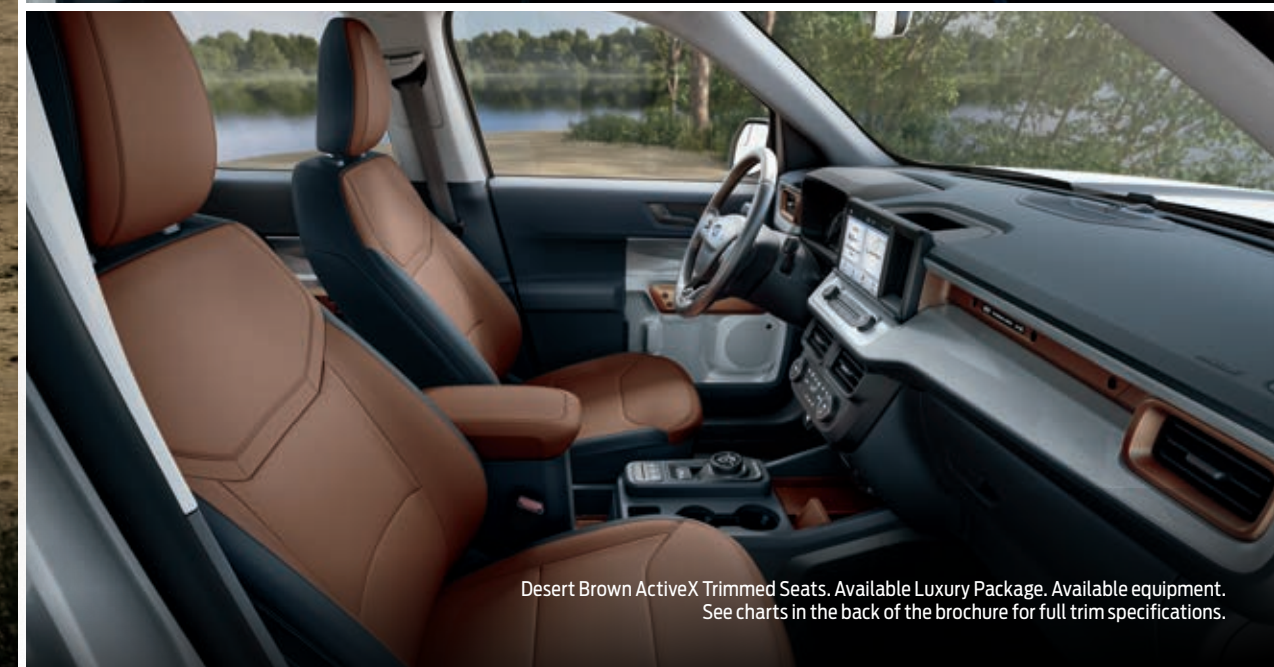
Cactus Gray. Available FX4™ Off-Road Package. Available equipment.

**LARIAT HIGHLIGHTS**

- 8-way power driver's seat
  - ActiveX™ Trimmed Seats
  - Ambient lighting
  - Dual rear USB ports
  - Leather-wrapped steering wheel
  - LED headlamps with LED signature accents
  - Power-sliding rear window
  - Available 4K Tow Package (gas with AWD only)
  - Available B&O® Sound System with 8 speakers
  - Available First Edition Package
  - Available Ford Co-Pilot360™ Package
  - Available FX4 Off-Road Package (AWD only)
  - Available LARIAT Luxury Package
  - Available SYNC® 3
- (See Specifications for all Package contents)

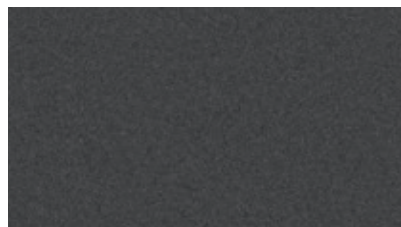


Instrument panel. Available equipment.



Desert Brown ActiveX Trimmed Seats. Available Luxury Package. Available equipment.  
See charts in the back of the brochure for full trim specifications.

## EXTERIOR



**1** Carbonized Gray Metallic



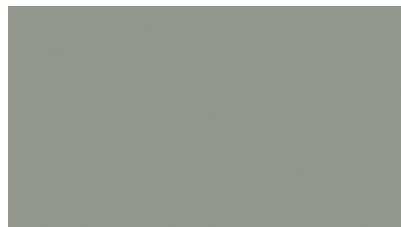
**2** Velocity Blue Metallic



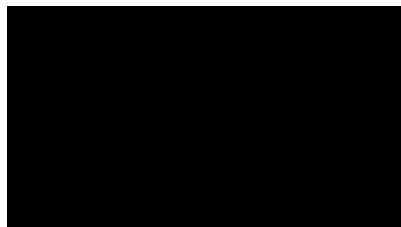
**3** Iconic Silver Metallic



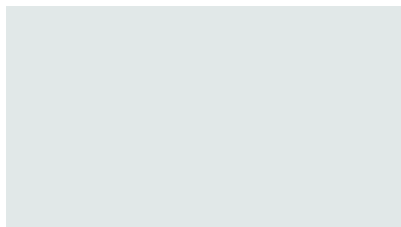
**4** Area 51



**5** Cactus Gray



**6** Shadow Black



**7** Oxford White



**8** Alto Blue Metallic Tinted Clearcoat<sup>1</sup>



**9** Hot Pepper Red Metallic Tinted Clearcoat<sup>1</sup>

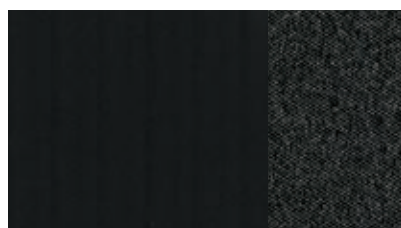


**10** Cyber Orange Metallic Tri-coat<sup>1</sup>

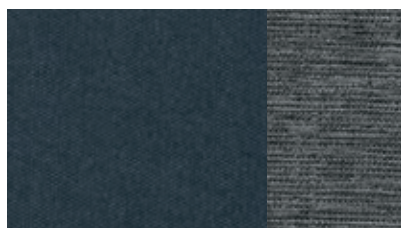


**11** Rapid Red Metallic Tinted Clearcoat<sup>1</sup>  
(late availability)

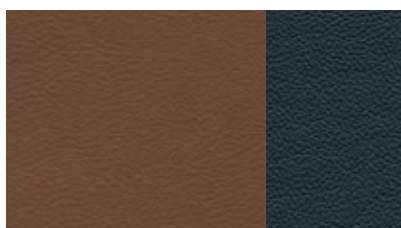
## INTERIOR



Black Onyx/Medium Dark Slate Cloth  
**XL** / 1-7



Navy Pier/Medium Slate Cloth  
**XLT** / 1-10



Desert Brown ActiveX™ Seating Material  
**LARIAT™** / 1-10  
**First Edition Package** / 1, 4, 11

## WHEELS



17" Steel  
**XL** Standard



17" Painted Aluminum  
**XLT** Standard



17" Aluminum  
**XLT/LARIAT** Optional<sup>2</sup>



17" Unique Aluminum  
**FX4™ Package** Included  
**First Edition Package** (gas) Included



18" Bright Aluminum  
**LARIAT** Standard



18" Black-Painted  
**LARIAT** Optional  
**First Edition Package** (hybrid) Included

## DIMENSIONS

Exterior (in.)	
Height	68.7
Width – Excluding mirrors	72.6
– Including mirrors	83.5
Length	199.7
Wheelbase	121.1
Ground clearance (min.)	8.3
Overhang – Front	34.1
– Rear	44.5
<b>Cargo Box (in.)</b>	
Inside height	20.3
Length at floor	54.4
Width at wheelhouse	42.6
Maximum width at floor	53.3
Volume (cu. ft.)	33.3
<b>Interior (in.)</b>	<b>1st row/2nd row</b>
Head room	40.3/39.6
Leg room (max.)	42.8/35.9
Hip room	55.4/54.1
Shoulder room	57.3/55.6
Passenger volume (cu. ft.)	100.3

## WEIGHT RATINGS

Maximum (lbs.)	FWD/AWD/Hybrid
GVWR	5,080/5,205/5,200
Payload <sup>3</sup>	1,555/1,512/1,564
GCWR (base)	5,900/6,145/6,010
GCWR (4K Tow Package)	7,900/8,145/–
Standard towing <sup>4</sup>	2,000
Maximum towing <sup>4,5</sup>	4,000
Approach angle	20.6°
Breakover angle	16.6°
Departure angle	21.9°

**1.** Additional charge. **2.** Requires 4K Tow Package with AWD or FX4 Off-Road Package. **3.** Max. payload varies and is based on accessories and vehicle configuration. See label on door jamb for carrying capacity of a specific vehicle. **4.** Max. towing varies based on cargo, vehicle configuration, accessories and number of passengers. **5.** Max. towing of 4,000 lbs. with available 2.0L EcoBoost® engine with AWD and available 4K Tow Package.

Colors are representative only. See your dealer for actual paint/trim options. Payload and towing are independent attributes and may not be achieved simultaneously.

## STANDARD FEATURES

### MECHANICAL & FUNCTIONAL

4-wheel disc brakes with Anti-Lock Brake System (ABS)

13.8-gallon fuel tank (hybrid)

16.5-gallon fuel tank (gas)

Compact spare wheel and tire with underframe carrier

Electric parking brake

Electric power-assisted steering

Rotary gear shift dial

Selectable Drive Modes – Normal, ECO, Sport, Slippery, Tow/Haul

### FORD CO-PILOT360™ TECHNOLOGY

Auto High-Beam Headlamps

Autolamp (Automatic On/Off Headlamps)

Post-Collision Braking

Pre-Collision Assist with Automatic Emergency Braking (AEB)

Rear View Camera

### CONNECTIVITY & ENTERTAINMENT

8" LCD center stack touchscreen with Bluetooth® connectivity

AM/FM stereo with 6 speakers

FordPass™ Connect<sup>1</sup> with 4G LTE Wi-Fi hotspot capability<sup>2</sup>

Smart-charging USB ports in instrument panel

(2: 1 USB-A and 1 USB-C)

### INTERIOR

12V powerpoints (2)

Coat hooks (2)

Dual visor mirrors

Front door storage bins

Front floor console with armrest and storage bin

Front overhead console with map lights

Manual-tilt/-telescoping steering column

Particulate air filter

Power windows and door locks

Steering wheel-mounted audio controls

### EXTERIOR

Daytime running lamps

Easy Fuel® capless fuel filler

Manual locking tailgate

Pickup box rail and tailgate moldings

Pickup box tie-down hooks (6)

Remote Keyless Entry System

Rocker moldings

Steel front and rear bumpers

Variable-intermittent windshield wipers with washers

### SAFETY AND SECURITY

Personal Safety System™ for driver and front passenger

includes dual-stage front airbags<sup>3</sup>

Driver's knee airbag<sup>3</sup>

Front-seat side airbags<sup>3</sup>

Safety Canopy® System with side-curtain airbags<sup>3</sup>

and rollover sensor

3-point safety belts for all seating positions

AdvanceTrac™ with RSC® (Roll Stability Control™)

Front height-adjustable shoulder safety belts

SecuriLock® Passive Anti-Theft System

SOS Post-Crash Alert System™

Tire Pressure Monitoring System (TPMS; excludes spare)

XL	XLT	LARIAT™
<b>S</b>	<b>S</b>	<b>MECHANICAL</b>
		Tires – 225/65R BSW all-season
	<b>S</b>	Tires – 225/60R BSW all-season
<b>P</b>	<b>O</b>	Tires – 225/65R BSW all-terrain (FWD)
<b>P</b>	<b>O</b>	Tires – 225/65R BSW all-season (AWD)
	<b>O</b>	Tires – 235/65R all-terrain aggressive
<b>S</b>	<b>S</b>	<b>2.5L Full Hybrid engine</b> with Auto Start-Stop Technology and automatic continuously variable transmission
<b>O</b>	<b>O</b>	<b>2.0L EcoBoost® engine</b> with 8-speed automatic transmission
<b>S</b>	<b>S</b>	Front-wheel drive (FWD)
<b>O</b>	<b>O</b>	All-wheel drive (AWD) (gas only)
<b>O</b>	<b>O</b>	Full-size spare wheel and tire (standard on hybrid)
		<b>FORD CO-PILOT360 TECHNOLOGY</b>
	<b>P</b>	Adaptive Cruise Control with Stop-and-Go
<b>P</b>	<b>P</b>	BLIS® (Blind Spot Information System) with Cross-Traffic Alert
	<b>P</b>	Evasive Steering Assist
<b>P</b>	<b>P</b>	Lane-Keeping System
	<b>P</b>	Lane Centering Assist
	<b>P</b>	Rear Parking Sensors
		<b>COMFORT &amp; CONVENIENCE</b>
<b>S</b>	<b>S</b>	4.2" productivity screen in instrument cluster
	<b>S</b>	6.5" productivity screen in instrument cluster
<b>S</b>	<b>S</b>	Manual air conditioning
	<b>S</b>	Dual-zone electronic automatic temperature control
<b>S</b>	<b>S</b>	Fixed rear window with solar tint
	<b>S</b>	Driver and front-passenger seat back map packet
<b>S</b>	<b>S</b>	Front-passenger seat back map pocket
<b>O</b>	<b>O</b>	400W AC power outlet rear of center console
	<b>S</b>	Rear under-seat storage bins
	<b>S</b>	Cruise control with steering wheel-mounted controls
	<b>S</b>	D-link bed connectors (4)
	<b>S</b>	Power tailgate lock
	<b>S</b>	Storage in cargo bed
	<b>S</b>	Wiper-activated LED headlamps
	<b>S</b>	Ambient lighting
	<b>S</b>	Intelligent Access with push-button start
	<b>P</b>	Leather-wrapped steering wheel
	<b>S</b>	Power-sliding rear window with defroster and privacy glass
	<b>S</b>	Power windows with one-touch-up/-down

XL	XLT	LARIAT
<b>S</b>		<b>SEATING</b>
		Cloth-trimmed seats
	<b>S</b>	Unique cloth-trimmed seats
		<b>S</b> ActiveX™ Seating Material
	<b>S</b>	6-way manual driver and 4-way manual front-passenger bucket seats with manual lumbar
	<b>S</b>	8-way power driver with power lumbar and 6-way manual front-passenger bucket seats with power lumbar
	<b>S</b>	3-passenger rear flip-up bench seat
	<b>S</b>	3-passenger rear flip-up bench seat with fold-down center armrest and 2 cupholders
		<b>CONNECTIVITY &amp; ENTERTAINMENT</b>
	<b>S</b>	Dual USB ports on rear of center console
	<b>P</b>	SYNC® 3 with 8" LCD capacitive touchscreen in center stack, 911 Assist®, AppLink®, Apple CarPlay® compatibility, Android Auto™ compatibility, and 2 smart-charging USB ports
	<b>P</b>	B&O® Sound System with 8 speakers including subwoofer, and HD Radio™ Technology
	<b>P</b>	SiriusXM® with 3-month Platinum Plan trial subscription <sup>4</sup>
	<b>P</b>	Wireless charging pad
		<b>APPEARANCE</b>
	<b>S</b>	Black mesh grille with black surround
	<b>S</b>	Black mesh grille with black surround and gray bars
	<b>S</b>	Black mesh grille with black surround and silver bars
	<b>S</b>	Black door and tailgate handles
	<b>S</b>	Body-color door and tailgate handles
	<b>S</b>	LED headlamps with signature lighting
	<b>S</b>	Black manual-folding sideview mirrors
	<b>S</b>	Black, power sideview mirrors with integrated spotter mirrors
	<b>P</b>	Body-color, power sideview mirrors with integrated spotter mirrors

XL	XLT	LARIAT
	<b>S</b>	<b>SAFETY &amp; SECURITY</b>
	<b>S</b>	Perimeter alarm
	<b>S</b>	SecuriCode® keyless entry keypad
		<b>OPTIONS</b>
<b>O</b>	<b>O</b>	Manual-sliding rear window (requires Ford Co-Pilot360 Package)
<b>O</b>	<b>O</b>	Aeroskin® hood protector – Smoke <sup>5</sup>
<b>O</b>	<b>O</b>	Aeroskin hood protector – Textured <sup>5</sup>
<b>O</b>	<b>O</b>	Bed crossbars
<b>O</b>	<b>O</b>	Bed divider kit (late availability)
<b>O</b>	<b>O</b>	Bed mat – Removable
<b>O</b>	<b>O</b>	Bedliner – Spray-in
<b>O</b>	<b>O</b>	Floor liners (includes carpeted floor mats) <sup>6,7</sup>
<b>O</b>	<b>O</b>	Floor liners (deletes carpeted floor mats) <sup>5</sup>
<b>O</b>	<b>O</b>	Pickup Box Extender <sup>5,6</sup>
<b>O</b>	<b>O</b>	Power moonroof
<b>O</b>	<b>O</b>	Protective film (hood/fenders) <sup>5</sup>
<b>O</b>	<b>O</b>	Side-window deflectors (4-piece) <sup>5</sup>
<b>O</b>	<b>O</b>	Splash guards (front/rear; late availability)
<b>O</b>	<b>O</b>	Tailgate lock (theft-prevention hinge lock) <sup>5</sup>
<b>O</b>	<b>O</b>	Tonneau cover – Hard rollup <sup>5,6</sup>
<b>O</b>	<b>O</b>	Tonneau cover – Hard trifold <sup>5,6</sup>
<b>O</b>	<b>O</b>	Tonneau cover – Soft-folding <sup>5</sup>
<b>O</b>	<b>O</b>	Tool box swing case – Driver side <sup>5</sup>
<b>O</b>	<b>O</b>	Tool box swing case – Passenger side <sup>5</sup>
<b>O</b>	<b>O</b>	TOUCHLINK truck bed lighting by Lumens (bed light system) <sup>5</sup>
<b>O</b>	<b>O</b>	Trailer hitch receiver with 4-pin connector

XL	XLT	LARIAT
<b>O</b>	<b>O</b>	<b>PACKAGES</b>
	<b>O</b>	<b>Ford Co-Pilot360 Package:</b> BLIS (Blind Spot Information System) with Cross-Traffic Alert; full-size spare (standard on hybrid); Lane-Keeping System with Lane-Keeping Alert, Lane-Keeping Assist, and Driver Alert
<b>O</b>	<b>O</b>	<b>4K Tow Package</b> (requires gas engine and AWD): 225/65R17 BSW all-season tires (XL/XLT), 225/60R18 BSW all-season tires (LARIAT), trailer hitch receiver with 7-pin wiring harness, transmission oil cooler, higher-capacity radiator, upgraded cooling fan, upgraded drive ratio, and trailer brake controller (optional 17" wheels on XLT/LARIAT include 235/65R17 aggressive all-terrain tires)
	<b>O</b>	<b>FX4™ Off-Road Package</b> (requires AWD): 17" unique aluminum wheels, all-terrain tires, 6.5" productivity screen in instrument cluster (standard on LARIAT), Selectable Drive Modes (Normal, Sport, Mud/Ruts, Sand, Tow/Haul), exposed front tow hooks, FX4 Off-Road box decals, Hill Descent Control™ skid plates, and trailer hitch receiver with 4-pin wiring harness
	<b>O</b>	<b>XLT Luxury Package:</b> 8-way power driver and 6-way manual passenger seats; 400W AC power outlet on rear of center console and in cargo box with USB ports in rear of center console; bed tie-down locking rails with 2 locking brackets; spray-in bedliner; full-size spare (standard on hybrid); body-color, heated sideview mirrors; heated front seats; heated wiper park; Remote Start System; leather-wrapped, heated steering wheel; LED cargo box lighting; and trailer hitch receiver with 4-pin wiring harness
	<b>O</b>	<b>LARIAT Luxury Package</b> (requires Ford Co-Pilot360 Package): 4-way manual front head restraints; 400W AC power outlet on rear of center console and in cargo box with USB ports in rear of center console; Adaptive Cruise Control with Stop-and-Go and Lane Centering; bed tie-down locking rails with 2 locking brackets; spray-in bedliner; B&O Sound System with 8 speakers; Post-Collision Braking; Evasive Steering Assist; heated sideview mirrors; heated front seats; heated steering wheel; heated wiper park; Remote Start System; LED cargo box lighting; Rear Parking Sensors; SiriusXM with 3-month Platinum Plan trial subscription; <sup>4</sup> SYNC 3 with 8" LCD capacitive touchscreen in center stack; trailer hitch receiver with 4-pin wiring harness; and wireless charging pad
	<b>O</b>	<b>First Edition Package</b> (requires AWD for gas): <b>LARIAT Luxury Package +</b> black-painted roof and sideview mirror caps, power moonroof, soft-folding tonneau cover, unique "First Edition" decal, and 17" unique aluminum wheel (gas) or 18" black-painted wheel (hybrid)

**S:** STANDARD

**O:** OPTIONAL

**P:** PACKAGED

**1.** FordPass Connect, the FordPass App, and complimentary Connected Service are required for remote features (see FordPass Terms for details). Connected service and features depend on compatible AT&T network availability. Evolving technology/cellular networks/vehicle capability may limit functionality and prevent operation of connected features. Connected service excludes Wi-Fi hotspot. **2.** Wi-Fi hotspot includes complimentary wireless data trial that begins upon AT&T activation and expires at the end of 3 months or when 3GB of data is used, whichever comes first. To activate, go to [www.att.com/ford](http://www.att.com/ford). **3.** Always wear your safety belt and secure children in the rear seat. **4.** Trial length and service availability may vary by model, model year or trim. Radio features, content and display may vary by vehicle. Some features may not be available while driving. Your trial subscription will automatically stop at the end of your trial period. Subscriptions offered and sold separately by SiriusXM for continued use after trial. Services are subject to the SiriusXM Customer Agreement and Privacy Policy available at [siriusxm.com](http://siriusxm.com) which includes complete terms and how to cancel which includes online methods or calling 1-866-635-2349. All fees, content and features are subject to change. **5.** Ford Licensed Accessory. **6.** Restrictions may apply. See your dealer for details. **7.** Do not place additional floor mats or any other covering on top of the original floor mats.



LARIAT in Area 51 with available FX4™ Off-Road and Luxury Packages accessorized with hood deflector,<sup>1</sup> dash cam,<sup>1</sup> fender flares,<sup>1</sup> splash guards, side window deflectors, and bed cap<sup>1,2</sup>



A. Hard roll-up tonneau/bed cover<sup>1</sup>

B. Floor liner

C. Graphic kits<sup>1</sup>

D. Bed mat with tailgate cover<sup>1</sup>

SHOP THE COMPLETE COLLECTION | [accessories.ford.com](https://accessories.ford.com)

**Ford Credit®** Get the ride you want. Whether you plan to lease or buy, Ford Credit has the option that's right for you. Ask your Ford Dealer for details or visit us online at [ford.com/finance](https://ford.com/finance).

**Ford Insure.** Insurance that lets you earn discounts for safe driving, offering a maximum discount of 40% off your auto insurance. Ford Insure works with your 2022 Maverick™ to gauge driving habits and calculate a discount based on how you drive. Visit [fordinsure.com](https://fordinsure.com) to learn more.

*American Road Services Company LLC (a Ford affiliate) is the licensed insurance agency offering Ford Insure and is underwritten by Nationwide Mutual Insurance Company and affiliates. Home Office: Columbus, OH. Ford Motor and Ford Credit are not insurance companies or agents. Subject to underwriting guidelines, review and approval. Details and availability varies; program criteria differ in California. Discounts do not apply to all coverage elements; actual savings vary by state, coverage selections, rating factors and policy changes.*

**Ford Licensed Accessories (FLA)** are warranted by the accessory manufacturer's warranty. FLA are designed and developed by the accessory manufacturer and have not been designed or tested to Ford Motor Company engineering requirements. Contact your Ford Dealer for details and/or a copy of all limited warranties.

**Ford Original Accessories.** They're warranted for whichever provides you the greatest benefit: 24 months/unlimited mileage, or the remainder of your Bumper-to-Bumper 3-year/36,000-mile (whichever comes first) New Vehicle Limited Warranty.

**Ford Protect™ Extended Service Plans.** Whether you purchase or lease your Ford vehicle, insist on genuine Ford Protect extended service plans. Ford Protect has a variety of plans to give you peace-of-mind protection whether you want vehicle component or maintenance coverage. Plus, they are fully backed by Ford and honored at all Ford dealerships in the U.S., Canada and Mexico. When you visit your dealer, insist on genuine Ford Protect extended service plans.

**New Vehicle Limited Warranty.** We want your Ford Maverick ownership experience to be the best it can be. Under this warranty, your new vehicle comes with 3-year/36,000-mile bumper-to-bumper coverage (whichever comes first), 5-year/60,000-mile Powertrain Warranty coverage (whichever comes first), 5-year/60,000-mile safety restraint coverage (whichever comes first), and 5-year/unlimited-mile corrosion perforation (aluminum panels do not require perforation) coverage (whichever comes first) – all with no deductible. Maverick unique electric components are covered during the Hybrid/Electric Unique Component Coverage, which lasts for 8 years or 100,000 miles (whichever comes first). Please ask your Ford Dealer for a copy of these limited warranties.

**Roadside Assistance.** Covers your vehicle for 5 years or 60,000 miles (whichever comes first), so you have the security of knowing that help may be only a phone call away should you run out of fuel, lock yourself out of the vehicle or need a winch back to a paved road, a battery jump start or towing. Your Ford Dealer can provide complete details on all of these advantages.

1. Ford Licensed Accessory. 2. Consult Owner's Manual for details on roof-rack load limits.

Ford and Oval Device, 911 Assist, ActiveX, AdvanceTrac, AppLink, BLIS, Built Ford Proud, Built Ford Tough, Easy Fuel, EcoBoost, F-Series, FLEXBED, Ford Co-Pilot360, Ford Credit, Ford Protect, FordPass, FordPass. Built to Keep You Moving., FX4, LARIAT, Maverick, Personal Safety System, Roll Stability Control, RSC, Safety Canopy, SecuriCode, SecuriLock, SOS Post-Crash Alert System, SuperCrew, SYNC and related marks are trademarks of Ford Motor Company.

Apple and Apple CarPlay are trademarks of Apple Inc., registered in the U.S. and other countries. BANG & OLUFSEN and B&O are registered trademarks of Bang & Olufsen Group. Licensed by Harman Becker Automotive Systems Manufacturing Kft. All rights reserved. Google, Android, Android Auto and Google Play are trademarks of Google LLC. HD Radio is a proprietary trademark of iBiquity Digital Corporation. SiriusXM and all related marks and logos are trademarks of SiriusXM Radio Inc. The Bluetooth word mark is a trademark of the Bluetooth SIG, Inc.

Comparisons based on competitive models (class is Small Compact Trucks), publicly available information and Ford certification data at time of release. Vehicles may be shown with optional and aftermarket equipment. Features may be offered only in combination with other options or subject to additional ordering requirements/limitations. Dimensions and capacity ratings shown may vary due to optional features and/or production variability. Information is provided on an "as is" basis and could include technical, typographical or other errors. Ford makes no warranties, representations, or guarantees of any kind, express or implied, including but not limited to, accuracy, currency, or completeness, the operation of the information, materials, content, availability, and products. Ford reserves the right to change product specifications, pricing and equipment at any time without incurring obligations. Your Ford Dealer is the best source of the most up-to-date information on Ford vehicles. Body manufacturers are responsible for compliance certification of the completed vehicle.

## EPA-ESTIMATED RATINGS

Actual mileage will vary.

### 2.5L FULL HYBRID

FWD  
42 CITY MPG  
33 HWY MPG  
37 COMB MPG

### 2.0L ECOBOOST®

FWD  
23 CITY MPG  
30 HWY MPG  
26 COMB MPG

AWD  
22 CITY MPG  
29 HWY MPG  
25 COMB MPG





From day one, we had the future in mind. And over 118 years later, we continue that tradition of innovation. Ford Co-Pilot360™ Technology is helping push us closer to autonomous driving. The latest generation of voice-activated SYNC® fosters untethered communication. And our fully electric vehicles – the all-new 2022 Ford F-150 Lightning® pickup and the Mustang Mach-E® SUV – are charging across America.

We've always had our mind on the future. Now we're building it.

22MAVPDF

©2021 Ford Motor Company



## FordPass. Built to Keep You Moving.™

Meet FordPass™ The app<sup>1</sup> that lets you access complimentary remote features including start/stop and lock/unlock, monitor your fuel level and oil life,<sup>2</sup> and puts Rewards, Roadside Assistance<sup>3</sup> and more in the palm of your hand.



**SCAN TO DOWNLOAD**  
or visit [FordPass.com](https://fordpass.com)  
*Data rates may apply.*

**1.** The FordPass App, compatible with select smartphone platforms, is available via download. Message and data rates may apply. **2.** FordPass Connect, the FordPass App, and complimentary Connected Service are required for remote features (see FordPass Terms for details). Connected service and features depend on compatible AT&T network availability. Evolving technology/cellular networks/vehicle capability may limit functionality and prevent operation of connected features. Connected service excludes Wi-Fi hotspot. **3.** Roadside Assistance is included for certain owners and available to everyone for a per-service fee. Ford reserves the right to change program details without obligations. Ford Roadside Assistance is a complimentary offering to all Ford owners for up to 5 years or 60,000 miles (from the date of sale), whichever comes first.